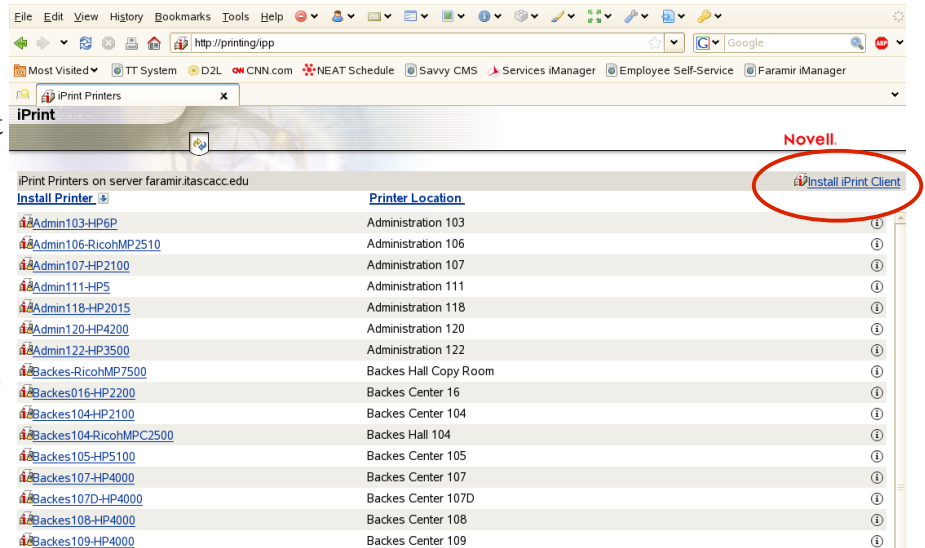


# How to setup your Laptop for Campus Printing

If you want to be able to print from your laptop while on campus, follow these instructions.

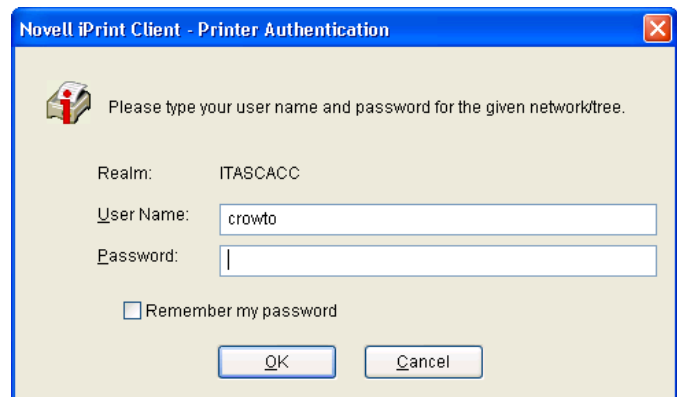
Goto: <http://printing/ipp>

You will have to install the iPrint client onto your machine



After you install the client, Close your browser. Then go back to <http://printing/ipp> select the printer you wish to install

You will be prompted for your Novell username and password:



You may be prompted for your username and password each time you print.

Remember, these print jobs are counted against your printing balance.